



111 WIGTON LANE

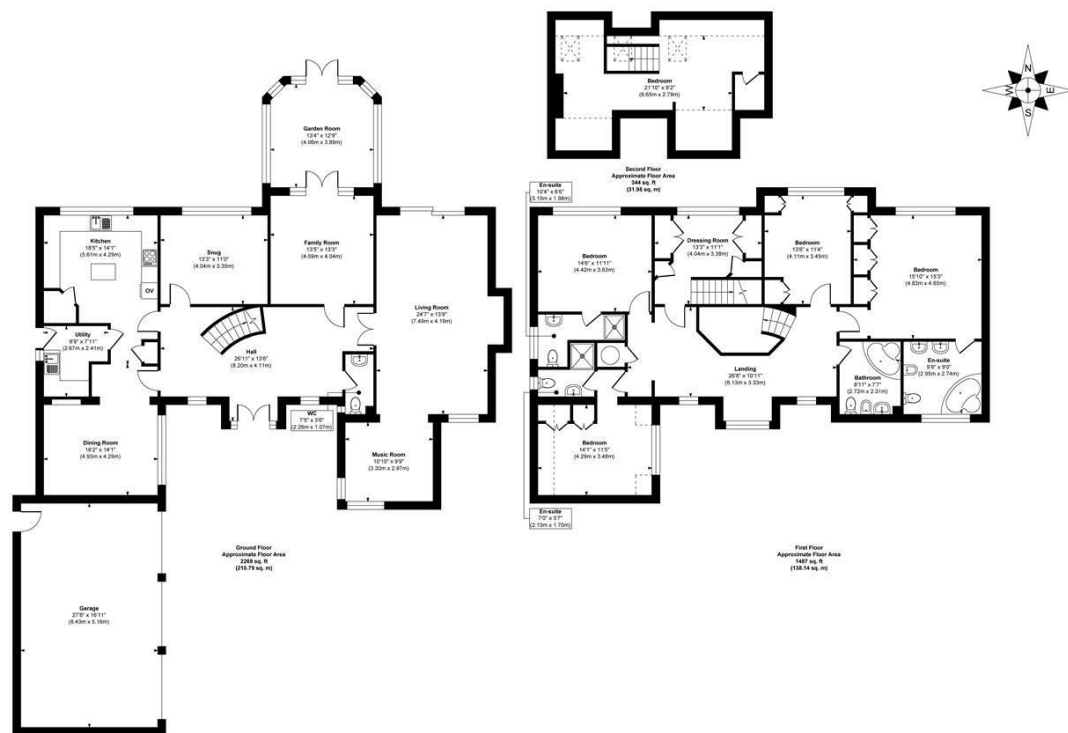
LEEDS, LS17 8SH

£1,195,000
FREEHOLD

111 Wigton Lane presents an exceptional development opportunity to acquire a prestigious six-bedroom, five-bathroom property, offering substantial potential for extension (subject to planning approval). Situated in the highly desirable area of Alwoodley, this property benefits from close proximity to a range of local amenities, including shops, restaurants, pubs, bars, transport links, and excellent schools. Nearby attractions such as the expansive Roundhay Park and the historic Harewood House further enhance its appeal, positioning this property as a prime investment opportunity.

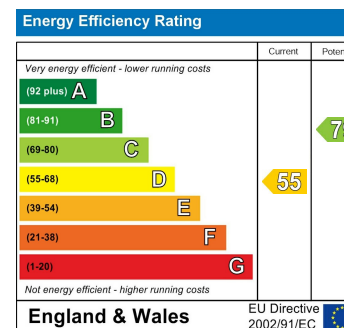
MONROE

SELLERS OF THE FINEST HOMES



Approx. Gross Internal Floor Area 4100 sq. ft / 380.88 sq. m
Illustration for identification purposes only, measurements are approximate, not to scale.

Copyright © Zenith Creations.



Agents Note: Whilst every care has been taken to prepare these particulars, they are for guidance purposes only. All measurements are approximate and are for general guidance purposes only and whilst every care has been taken to ensure their accuracy, they should not be relied upon and potential buyers/tenants are advised to recheck the measurements

Alwoodley Sales
716 King Lane Alwoodley
Leeds
West Yorkshire
LS17 7BA

0113 870 4443
hello@monroeestateagents.com
www.monroeestateagents.com

MONROE

SELLERS OF THE FINEST HOMES